

# *The Essence of Cabinetry*



*"That's My Style..."*

**WELLBORN**  
CABINET, INC.<sup>®</sup>  
*The Essence of Cabinetry*



*Wellborn Family*

## Our Vision

The Wellborn Family is committed to be the most valued provider of permanent home cabinetry designed for a lifetime of gracious living.

## Our Quality

The entire Wellborn family of 1600 employees takes great pride in producing quality products. Our Quality Control Team includes over 100 employees dedicated to ensuring the quality of your cabinetry. Our certified inspectors man over 30 quality checkpoints throughout the facility.



*Quality Team*

*Dear Homeowner,*

*Just as your home gently whispers the essence of your character, Wellborn Cabinet, Inc., imparts the true Essence of Cabinetry. As you traverse the following pages, consider the heart of your home and allow us to help make your memory stage a little more dramatic, a little more charming. From our family to yours, we present*

*The Essence of Cabinetry.*

*Paul Wellborn*



# Planning your kitchen

## Dream

Collect photos, clippings and ideas that represent your dream kitchen, bath or other room.

## Evaluate

Rate your kitchen or bath for limitations, possibilities, needs and purpose.

## Seek

Locate your nearest Wellborn Dealer to assist in making your dreams come true. Check out our web site at [wellborn.com](http://wellborn.com).

## Measure

Proper and accurate measuring is a must before choosing your cabinetry and accessories. Your Wellborn Dealer will be glad to help.

## Draw

Draw your floor plan to scale on grid paper to plan the complete layout of the room. Show windows, doors and utility connections. Again, your Wellborn Dealer will be glad to help.

## Budget

Determine your budget and let your Wellborn Dealer show you the many options that can help to keep you within those guidelines.

## Relax

Your dream kitchen or bath is now a reality.

## Enjoy

Enjoy the beauty of your quality Wellborn cabinetry for years to come.



## Index

### Premier and WoodCraft Series

<i>Cherry</i> .....	4 — 15
<i>Richmond</i> .....	4
<i>Vienna</i> .....	5
<i>Madison</i> .....	6 — 9
<i>Milan</i> .....	10
<i>Savannah</i> .....	11
<i>Melrose</i> .....	11
<i>Rose Hall</i> .....	12 — 13
<i>Bristol</i> .....	14
<i>Hanover</i> .....	15
<i>Cherry &amp; Character Cherry Finishes</i> .....	15
<i>Character Maple</i> .....	16 — 17
<i>Bristol</i> .....	16
<i>Seville</i> .....	16 — 17
<i>Rose Hall</i> .....	17
<i>Maple</i> .....	18 — 53
<i>Melrose</i> .....	18 — 20
<i>Savannah</i> .....	21 — 23
<i>Bridgeport</i> .....	22
<i>Richmond</i> .....	22 — 23
<i>Vienna</i> .....	24 — 25
<i>Harbour</i> .....	26 — 27
<i>Madison</i> .....	28 — 31
<i>Seville</i> .....	32 — 35
<i>Sonoma</i> .....	36 — 37
<i>Hawthorne</i> .....	38
<i>Rose Hall</i> .....	38 — 41
<i>Essex</i> .....	42
<i>Hanover</i> .....	42 — 44
<i>Milan</i> .....	45
<i>Bristol</i> .....	46 — 47
<i>Monterey</i> .....	48 — 49
<i>Sydney</i> .....	50 — 52
<i>Maple and Character Maple Finishes</i> .....	53
<i>Oak</i> .....	54 — 65
<i>Hanover</i> .....	54 — 55
<i>Rose Hall</i> .....	56 — 59
<i>Seville</i> .....	60 — 62
<i>Essex</i> .....	62
<i>Milan</i> .....	63 — 64
<i>Oak Finishes</i> .....	65
<i>Hickory</i> .....	66 — 71
<i>Hanover</i> .....	66 — 67
<i>Rose Hall</i> .....	68 — 70
<i>Hickory Finishes</i> .....	71

<i>Thermofoil</i> .....	72 — 73
-------------------------	---------

<i>Brighton</i> .....	72 — 73
<i>Thermofoil Finishes</i> .....	75

### Deluxe Series

<i>Thermofoil</i> .....	74 - 75
<i>Sea Spray</i> .....	74 — 75
<i>Thermofoil Finishes</i> .....	75

### Select Series

<i>Cherry</i> .....	76 — 77
<i>Prairie</i> .....	76
<i>Harmony</i> .....	77
<i>Cherry Finishes</i> .....	77
<i>Maple</i> .....	78 — 85
<i>Harmony</i> .....	78 — 79
<i>Harvest</i> .....	79 — 81
<i>Prairie</i> .....	81 — 82
<i>Arlington</i> .....	83 — 85
<i>Maple Finishes</i> .....	85
<i>Poplar</i> .....	86
<i>Bedford Square</i> .....	86
<i>Poplar Finishes</i> .....	86
<i>Oak</i> .....	87 — 89
<i>Arlington</i> .....	87
<i>Harvest</i> .....	88 — 89
<i>Finishes</i> .....	89
<i>Laminate</i> .....	90
<i>Manchester</i> .....	90
<i>Laminate Finishes</i> .....	90
<i>Thermofoil</i> .....	91
<i>Nantucket</i> .....	91
<i>Newport</i> .....	91
<i>Imperial</i> .....	91
<i>Thermofoil Finishes</i> .....	91

<i>Unique Styles for Every Room</i> .....	92 — 101
---	----------

<i>Accessories &amp; Moulding</i> .....	102 — 103
---	-----------

<i>Mullions Doors and Decorative Glass Doors</i> .....	104
--	-----

<i>Cabinet Construction</i> .....	105 — 113
-----------------------------------	-----------

<i>Warranty &amp; Green Choice</i> .....	114
--	-----

<i>Beauty of Natural Hardwood</i> .....	115
---	-----



*Richmond Cherry,  
Natural Java & Madison Square Maple,  
Vintage Midnight*



*Vienna Cherry, Caramel*

### *Urban Classic*

"I AM ALWAYS AHEAD OF THE TRENDS, BUT I KNOW THAT THE CLASSICS WILL ALWAYS BE IN STYLE. RICH CHERRY WOOD PAIRED WITH ARCHITECTURAL DETAILS ARE THE PERFECT MATCH FOR ME."



*Vienna Cherry, Sable*



*Madison Square Cherry, Autumn Spice*



*Timeless  
Treasure*

“JWELED TONES  
AND WARM RICH  
WOODS REMIND  
ME OF  
OUR TRIPS TO  
THE FRENCH  
COUNTRYSIDE...  
OH TO LIVE  
LIKE THAT  
EVERY DAY...”



*Madison Square  
Cherry, Sable*



*Madison Arch Cherry, Café*



*Madison Cathedral Cherry, Natural*



*Madison Square Cherry, Natural*



*Madison Square Cherry, Sugar-n-Spice*



*Madison Square & Cathedral Cherry,  
Autumn Spice*

## *Gathering Spot*

“THE BEST CONVERSATIONS  
TAKE PLACE IN THE KITCHEN.  
COME HAVE A CUP OF COFFEE  
WITH ME... I LOVE MY KITCHEN  
FILLED WITH FRIENDS  
AND FAMILY.”

*Madison Cathedral Cherry,  
Cocoa*



*Madison Square Cherry, Autumn Spice*



*Milan Cherry, Cocoa*



*Simply Fashionable*

“LIFE IS HECTIC LIVING IN THE BIG CITY,  
BUT MY HOME IS A HAVEN. SIMPLE,  
UNCLUTTERED AND ALWAYS  
BEAUTIFUL.”

*Milan Cherry, Espresso*



*Savannah Cherry, Cocoa*



*Melrose Cherry, Autumn Spice* 11



*Rose Hall Arch Cherry, Cocoa*



*Rose Hall Square Cherry, Light*

## *Worldly Treasures*

"MY BAGS ARE PACKED AND I AM OFF ON ANOTHER TRAVEL ADVENTURE. SHOPPING FOR GOLD GILT MIRRORS ON PORTOBELLO ROAD OR VINTAGE SCARLET VELVET AT THE PARISIAN FLEA MARKET... I LOVE DECORATING MY HOME WITH FOUND TREASURES."



*Rose Hall Cathedral Cherry, Dark*



*Rose Hall Square Cherry, Cocoa & Madison Square Maple, Midnight*



*Bristol Cherry, Cocoa*



*Style & Utility*

“A SERIOUS COOK AND NEVER A SLAVE, I CREATE WORKS OF ART IN MY KITCHEN... EASILY AND EFFICIENTLY FOR THE INDULGENCE OF MY FRIENDS AND FAMILY.”





*Hanover Cherry with Classic Drawer Front, Light*

## Cherry & Character Cherry Finishes

*The collection of cherry finishes is available on each cherry and character cherry door style, creating almost 200 unique options for you. The cherry stains include 8 colors, ranging from Natural to deep rich Espresso. There are also eight selections of cherry stains that are highlighted with a glaze creating beautiful finish choices.*

### STAINS



Natural  
NAT



Light  
LGT



Caramel  
CML



Dark  
DRK



Sable  
SBL



Autumn Spice  
ASP



Sienna  
SEA



Espresso  
ESP

### STAINS WITH GLAZES



Natural Java  
NCJ



Sugar-n-Spice  
SNS



Caramel Java  
CLJ



Cocoa  
COC



Café  
CAF



Dark Charcoal  
DKC



Sienna Charcoal  
SEC



*Bristol Character Maple, Rustic*



16 *Seville Arch & Square Character Maple, Café*

*Seville Square Character Maple, Sable*



### *Coastal Escape*

"I LOVE THE FEEL OF COOL SAND  
BENEATH MY FEET AND THE  
HEAT OF THE SUN ON MY FACE.  
VACATIONING AT THE BEACH EVOKES  
A SENSE OF CALM AND PEACE...  
I BROUGHT MY VACATION  
HOME WITH ME."

*Rose Hall Square Character Maple,  
Sugar-n-Spice & Cottage Divinity*



*Melrose Maple, Honey Butter Toffee & Hanover Oak with Classic Drawer Front, Sable*



### *Informal Elegance*

“MY THREE FAVORITE  
ACCESSORIES ARE  
MY DIAMONDS,  
MY PEARLS  
AND MY FAT  
FUZZY SLIPPERS.”





*2009 HGTV Dream Home Kitchen  
Melrose Maple, Honey Butter*



*Melrose Maple,  
Nutmeg*



*Home Sweet Home*

“HOMEMADE JAMS AND PEACH  
COBBLER FRESH FROM THE OVEN  
REMIND ME OF VISITING AT  
GRANDMA’S HOUSE FOR THE  
SUMMER. I LOVE HOW COMFY  
AND COZY MY KITCHEN IS.”

*Melrose Maple,  
Mocha Crème*

*Melrose Maple, Glacier*



*Savannah Maple,  
Nutmeg & Espresso*



*Savannah Maple, Divinity 21*



*Savannah Maple, Rustic*



22 *Savannah Maple, Nutmeg & Espresso*



*Richmond Maple, Vintage Sage Mocha & Bridgeport Maple, Vintage Sage Mocha*



*Savannah Maple, GreyStone*



*Richmond Maple, Glacier*



### *Modern Spice*

“GREAT KITCHENS ARE LIKE GREAT RECIPES. FIRST, START WITH A GOOD FOUNDATION. NEXT, FILL OUT THE STRUCTURE WITH A MIX OF COMPLEMENTING INGREDIENTS. LAST, ADD TOUCHES OF BRIGHT AND FRESH SPICES FOR A BEAUTIFUL FINISH. THAT’S MY STYLE.”





*Harbour & Melrose Maple, Sage Mocha  
& Melrose Cherry, Caramel Java*



*Harbour Maple, Divinity  
& Madison Square Maple,  
26 Antique Evergreen*

## Hearth and Home

"HONEYED WOOD TONES PAIRED WITH WASHES OF DEEP COLOR REMIND ME OF FALL FESTIVALS... SIPPING ON HOT APPLE CIDER AND BROWSING THROUGH THE ARTISTS' STALLS... I WISH IT COULD BE FALL ALL YEAR."



*Harbour Maple, Rustic  
& Melrose Maple,  
Vintage Midnight*



*Harbour Maple, Honey*



*Madison Square Maple, Mocha Crème*



*28 Madison Arch Maple, Espresso & Mocha Crème*



*Madison Square Maple, Honey & Antique Evergreen*

### *Rich Traditions*

“CELEBRATING THE HOLIDAYS  
 CREATES FAMILY TRADITIONS  
 THAT WILL LAST FOR  
 GENERATIONS. OH THE  
 STORIES MY DINING ROOM  
 WALLS COULD TELL.”



*Madison Cathedral Maple,  
 Cappuccino*



*Madison Square Maple, Mocha Crème*



### *Cozy Cottage*

"FRESH HERBS AND SWEET  
BOUQUETS OF FLOWERS  
GATHERED FROM THE FIELD CAN  
BE FOUND IN MY HOME ANYTIME.  
MY COZY KITCHEN FITS ME JUST  
RIGHT."

*Madison Square Maple,  
Honey & Antique Evergreen*



*Madison Cathedral Maple,  
Espresso & Mocha Crème*



*Seville Square Maple, Cranberry*



### *Gracefully Provincial*

“BRIGHT BLUE WALLS SCATTERED WITH SPOTS OF YELLOW REMIND ME OF FIELDS OF SUNFLOWERS SWAYING IN THE BREEZE AGAINST A BRIGHT BLUE SKY IN PROVENCE...MY KITCHEN GRACES ME WITH THIS FEELING EVERY DAY.”

*Seville Square Maple, Medium*



*Seville Square  
Maple, Mocha Crème  
& Cinnamon*



*Seville Arch Maple, Natural*



## *Welcome Home*

“COME IN,  
KICK YOUR SHOES OFF,  
AND SIT FOR A WHILE...  
WELCOME TO MY HOME.”

*Seville Arch Maple, Light*



*Seville Arch Maple, Divinity*



*Seville Arch Maple, Honey Butter*



*2009 HGTV Dream Home Master Bath  
Sonoma Maple, GreyStone*



*Sonoma Maple, Midnight  
& Bristol Maple, Pebble*





*Hawthorne Square Maple,  
Cinnamon*



*Rose Hall Square Maple,  
Cinnamon*



*Rose Hall Square Maple, Light*

*Classically Beautiful*

“I LOVE WATCHING CLASSIC BLACK AND WHITE FILMS FILLED WITH SO MUCH STYLE AND ELEGANCE. EVERY STARLET DESERVES A BEAUTIFUL DRESSING ROOM... I AM NO EXCEPTION.”



*Rose Hall Square Maple, Natural*



*Rose Hall Square Maple, Rustic*



*Rose Hall Square Maple, Sugar-n-Spice*



*Rose Hall Arch Maple, Honey & Midnight*

### *Natures Reflection*

“I SEE THE VIEW OF BURGUNDY GRAPES HANGING LOW ON THE BRANCHES IN THE SUN-KISSED VINEYARD OUTSIDE MY WINDOW. NATURE’S BEAUTY INSPIRES ALL THAT I SEE EVERYDAY, AND MY DINING ROOM IS A PERFECT REFLECTION OF THIS.”



*Rose Hall Cathedral Maple, Medium*



*Essex Maple, Light*



*Hanover Maple with Classic Drawer Front, Natural*



*Hanover Maple with  
Classic Drawer Front, Natural*



*Hanover Maple with Classic Drawer Front, Divinity*



*2009 HGTV Dream Home Guest Bathroom  
Hanover Maple, Midnight*



*Hanover Maple with  
Classic Drawer Front &  
Harbour Maple, Glacier*

*Hanover Maple with  
Classic Drawer Front, Rustic  
& Seville Square Maple,  
Midnight*





*Milan Maple, Medium*

## *Contemporary Fusion*

"I HAVEN'T MET A RECIPE THAT I COULDN'T MASTER. EAST MEETS WEST WITH SEAMLESS EFFORT IN A FUSION OF FLAVORS AND STYLES."



*Milan Maple, Light*



*2008 HGTV Dream Home Kitchen, Bristol Maple, Glacier*

## HGTV Dream Home 2008

Wellborn was the proud sponsor of the 2008 HGTV Dream Home in Islamorada, Florida.

The designer's choice for the home is our Bristol Maple with the crisp white finish of Glacier in the kitchen, coffee bar and guest bath and Espresso in the master bathroom. Just as Bristol was the perfect choice for the HGTV

Dream Home, you too can decorate your dream home with Bristol Maple.





*Bristol Maple, Natural & Espresso*



*2008 HGTV Master Bath, Bristol Maple, Espresso*



*2008 HGTV Dream Home Guest Bath, Bristol Maple, Glacier*



*2008 HGTV Dream Home Coffee Bar, Bristol Maple, Glacier*

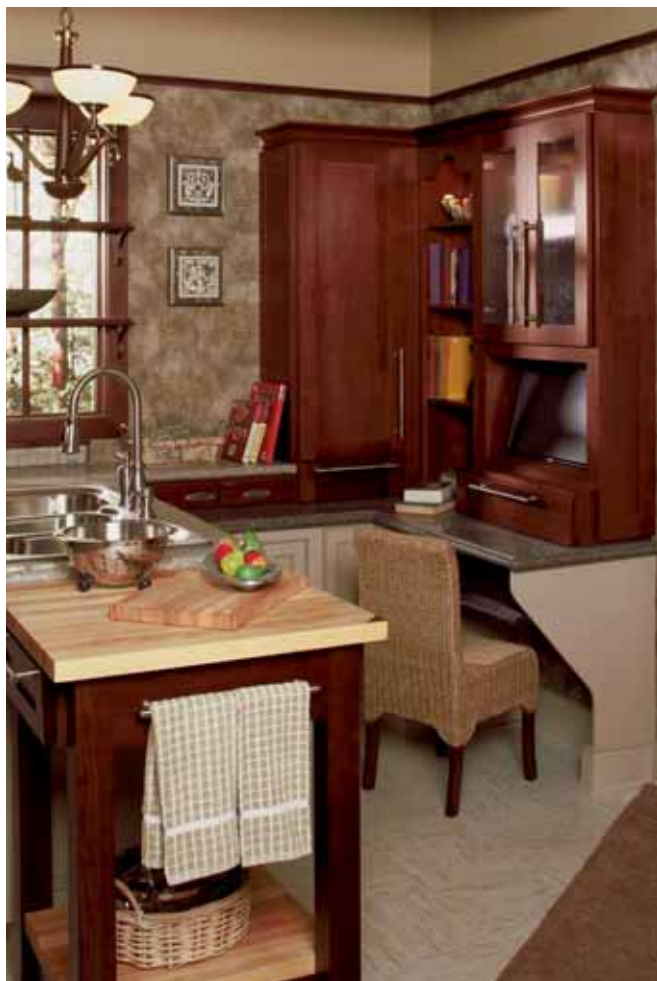


*Monterey Maple, Pebble Java  
& Hanover Hickory with Classic Drawer Front,  
Sienna Charcoal*

### *Home Work*

“I LOVE WAKING UP IN MY JAMMIES,  
GRABBING A CUP OF JOE, AND PERUSING  
THE LOCAL NEWSPAPER. WHEN IT IS TIME  
TO GO TO WORK, I JUST WALK A FEW STEPS  
INTO MY OFFICE AND START THE DAILY  
GRIND.

I LOVE HOME WORK!”



## *Eastern Styling*

“LACQUERWARE: A LUSTROUS LAYER OF LACQUER HAND APPLIED AND THEN WORN OVER TIME BY CONTINUED USE... THAT IS MY IDEA OF BEAUTY. START WITH A RICH MIDNIGHT BLACK FINISH THAT IS HAND ENHANCED TO MIMIC YEARS OF USE, ADD IN GRACEFUL LINES AND SIMPLE DETAILS AND YOU HAVE THE PERFECT MASTER BATHROOM, DESIGNED JUST FOR ME.”



*Monterey Maple, Vintage Midnight*



*Monterey Maple, Café*







*Sydney Maple, Sienna & Natural*



*Sydney Maple, Nutmeg &  
52 Hanover Oak, Pimento Charcoal*



*Sydney Maple, Sienna*

## STAINS



Natural  
NAT



Light  
LGT



Caramel  
CML



Medium  
MED



Sable  
SBL



Cranberry  
CBY



Sienna  
SEA



Espresso  
ESP

# Maple and Character Maple Finishes

## STAINS WITH GLAZES



Honey  
HON



Sugar-n-Spice  
SNS



Rustic  
*Burnished, Distressed,  
Spatter & Wormhole Effects  
(No Glaze)*  
RUS



Cinnamon  
CIN



Nutmeg  
NMG



Caramel Java  
CLJ



Café  
CAF



Antique Evergreen  
AGR



Sienna Charcoal  
SEC

*All maple and character maple door styles are available in 40 color selections which present over 1200 unique choices for you. This color palette is created with both stains and painted finishes many of which can be enhanced with a glaze highlight and Vintage Technique.*

## PAINTS



Glacier  
GLR



Divinity  
DIV



Pebble  
PBL



Honey Butter  
HBR



Sage  
SAG



Pimento  
PIM



Midnight  
MID

## PAINTS WITH GLAZES



Cappuccino  
CAP



Mocha Crème  
MCR



GreyStone  
GST



Pebble Java  
PBJ



Honey Butter Toffee  
HBT



Sage Mocha  
SGM



Pimento Charcoal  
PMC

## VINTAGE TECHNIQUE ON PAINTED FINISHES WITH GLAZES



Vintage  
Cottage Divinity  
*Spatter Effect (No Glaze)*  
DIV C V



Vintage  
Cappuccino  
CAP V



Vintage  
Mocha Crème  
MCR V



Vintage  
GreyStone  
GST V



Vintage  
Pebble Java  
PBJ V



Vintage  
Honey Butter Toffee  
HBT V



Vintage  
Sage Mocha  
SGM V



Vintage  
Pimento Charcoal  
PMC V



Vintage  
Midnight  
*(No Glaze)*  
MID V



*Hanover Oak with Classic Drawer Front, Medium*

### *Stylish Function*

“SO STYLISH AND APPEALING,  
BUT LOOK AT THE STORAGE!  
I AM A HARDWORKING INDIVIDUAL.  
WHY SHOULDN'T MY BATHROOM BE?”



*Hanover Oak with  
Classic Drawer Front, Espresso*



*Hanover Oak, Cocoa &  
Milan Cherry, Natural Java*





*Rose Hall Square Oak, Light*



### *Elements*

“STRONG AND RUGGED,  
RELAXED AND INVITING,  
MY HOME TRULY REFLECTS  
WHO I AM.”

*Rose Hall Square Oak,  
Medium*



*Rose Hall Cathedral Oak, Light*



*Rose Hall Arch Oak, Medium*



*Rose Hall Square Oak, Medium*



*Rose Hall Square Oak, Natural*



*Rose Hall Cathedral Oak, Light*



*Rose Hall Square Oak, Natural*

*Timeless Classic*

I LIKE THE CLASSICS,  
 "WARM TONES OF GOLDEN OAK MIXED  
 WITH STYLING THAT IS TIMELESS.  
 MY HOME IS DESIGNED TO ENDURE  
 THE TEST OF TIME,  
 JUST LIKE ME.



*Rose Hall Square Oak,  
 Medium*



*Seville Square Oak, Cottage Divinity  
& Sonoma Maple, Pimento Charcoal*



### *Crafty Cottage*

"THIS IS MY HOME...  
IT IS NOT A HOUSE.  
MY HOME  
AWAY FROM HOME  
AND YET I NEVER  
LEAVE TOWN...  
A PLACE I CAN ALWAYS  
BE MYSELF."





*Seville Square Oak, Dark*



*Fresh Traditions*

“BRIGHT GREENS AND LEMON YELLOWS REMIND ME OF SPRING WHEN THE DAFFODILS ARE BEGINNING TO BLOOM. OH TO HAVE ETERNAL SPRING.”

*Seville Square Oak, Dark*



*Seville Arch Oak,  
Dark*



*Old World  
Charm*

"I AM A CHEF THAT BELIEVES IN DOING THINGS THE WAY THEY HAVE ALWAYS BEEN DONE. DELICATE SAUCES SIMMER IN COPPER POTS, WHILE THE BREAD BAKES IN THE OVEN... THE AROMAS WRAFT THROUGH THE HOUSE AND INVITE MY FAMILY TO GATHER IN THE KITCHEN."

*Essex Oak, Light*



*Milan Oak, Nutmeg*



### *Modern Comfort*

“A GREAT MEAL, LIKE A HOME, STARTS WITH A BASIC FOUNDATION AND ADDING SPICE BRINGS OUT ITS CHARACTER. AS I TRANSFORM MY HOME INTO THE ULTIMATE REFLECTION OF ME, MY FOUNDATION REMAINS STRONG TO ACCEPTING CHANGE.”





*Milan Oak, GreyStone with Espresso Accents*



*Milan Oak, GreyStone with Espresso Accents*

*Modern Movement*

“A MASTER OF MODERN STYLING AND CONTEMPORARY LINES, FRANK LLOYD WRIGHT IS MY HERO.”



*Milan Oak, Natural*

## STAINS



Natural  
NAT



Light  
LGT



Medium  
MED



Dark  
DRK



Caramel  
CML



Sable  
SBL



Sienna  
SEA



Cranberry  
CBY



Espresso  
ESP

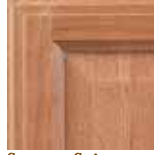
## Oak Finishes

*Wellborn's color palette of 41 stains and paints transform the beautiful grains of oak into 400 selections where you are sure to find your style.*

## STAINS WITH GLAZES



Honey  
HON



Sugar-n-Spice  
SNS



Rustic  
*Burnished, Distressed,  
Spatter & Wormhole Effects  
(No Glaze)*  
RUS



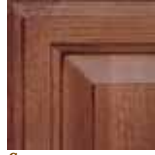
Cinnamon  
CIN



Nutmeg  
NMG



Caramel Java  
CLJ



Cocoa  
COC



Café  
CAF



Sienna Charcoal  
SEC

## PAINTS



Glacier  
GLR



Divinity  
DIV



Pebble  
PBL



Honey Butter  
HBR



Sage  
SAG



Pimento  
PIM



Midnight  
MID

## PAINTS WITH GLAZES



Cappuccino  
CAP



Mocha Crème  
MCR



GreyStone  
GST



Pebble Java  
PBJ



Honey Butter Toffee  
HBT



Sage Mocha  
SGM



Pimento Charcoal  
PMC

## VINTAGE TECHNIQUE ON PAINTED FINISHES WITH GLAZES



Vintage  
Cottage Divinity  
*Spatter Effect (No Glaze)*  
DIV C V



Vintage  
Cappuccino  
CAP V



Vintage  
Mocha Crème  
MCR V



Vintage  
GreyStone  
GST V



Vintage  
Pebble Java  
PBJ V



Vintage  
Honey Butter Toffee  
HBT V



Vintage  
Sage Mocha  
SGM V



Vintage  
Pimento Charcoal  
PMC V



Vintage  
Midnight  
*(No Glaze)*  
MID V



*Hanover Hickory with Classic Drawer Front, Natural*



### *Nature Made*

"I AM INSPIRED BY NATURE...  
MY KITCHEN IS A REFLECTION  
OF MY STYLE."

## *Natural Character*

"QUIRKS, IMPERFECTIONS, AND BOLD STREAKS OF COLOR ARE A NATURAL PART OF MY CHARACTER, MY KITCHEN IS NO DIFFERENT."



*Hanover Hickory, with  
Classic Drawer Front, Natural*



*Hanover Hickory,  
Dark*



*Rose Hall Arch Hickory,  
Natural*

*Pure Efficiency*

"I LIKE EVERYTHING IN ITS PLACE  
AND A PLACE FOR EVERYTHING.  
MY KITCHEN IS THE ESSENCE  
OF EFFICIENCY."



*Rose Hall Square Hickory,  
Cottage Divinity*

## *Garden State*

"I AM INSPIRED BY THE BEAUTY FOUND IN MY GARDEN. GRAB A BASKET FILLED WITH THE FRUITS OF NATURE AND JOIN ME IN THE KITCHEN."



*Rose Hall Arch Hickory, Medium*



*Rose Hall Square Hickory, Natural*



*Rose Hall Square Hickory, Medium*



### *Country Styling*

“I LOVE RUSTIC DESIGN  
WITH CASUAL COMFORT.”

*Rose Hall Square Hickory, Natural*

## STAINS



Natural  
NAT



Light  
LGT



Medium  
MED



Caramel  
CML



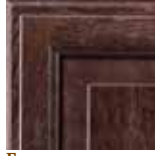
Dark  
DRK



Sable  
SBL



Sienna  
SEA



Espresso  
ESP

## Hickory Finishes

*Wellborn offers a color palette of 40 stains and painted finishes for a design selection in hickory that complements many design styles.*

## STAINS WITH GLAZES



Honey  
HON



Sugar-n-Spice  
SNS



Rustic  
*Burnished, Distressed,  
Spatter & Wormhole  
Effects (No Glaze)*  
RUS



Cinnamon  
CIN



Nutmeg  
NMG



Caramel Java  
CLJ



Cocoa  
COC



Café  
CAF



Sienna Charcoal  
SEC

## PAINTS



Glacier  
GLR



Divinity  
DIV



Pebble  
PBL



Honey Butter  
HBR



Sage  
SAG



Pimento  
PIM



Midnight  
MID

## PAINTS WITH GLAZES



Cappuccino  
CAP



Mocha Crème  
MCR



GreyStone  
GST



Pebble Java  
PBJ



Honey Butter Toffee  
HBT



Sage Mocha  
SGM



Pimento Charcoal  
PMC

## VINTAGE TECHNIQUE ON PAINTED FINISHES WITH GLAZES



Vintage  
Cottage Divinity  
*Spatter Effect (No Glaze)*  
DIV C V



Vintage  
Cappuccino  
CAP V



Vintage  
Mocha Crème  
MCR V



Vintage  
GreyStone  
GST V



Vintage  
Pebble Java  
PBJ V



Vintage  
Honey Butter Toffee  
HBT V



Vintage  
Sage Mocha  
SGM V



Vintage  
Pimento Charcoal  
PMC V



Vintage  
Midnight  
*(No Glaze)*  
MID V



*Brighton Arch Thermofoil, Linen*

## *Tranquility & Harmony*

“THE SPA IS A REFUGE OF  
TRANQUILITY AND HARMONY  
FROM THE CHAOS OF EVERYDAY LIFE.  
MY BATHROOM TAKES ME THERE DAILY.”



*Brighton Square Thermofoil, White with Light Maple Moulding*

# Deluxe Series



*Sea Spray Arch Thermofoil, White*



*74 Sea Spray Arch Thermofoil, White*



*Sea Spray Square Thermofoil, White*



## Thermofoil Colors

*Thermofoil doors and drawer fronts are covered in a strong scratch resistant thermofoil. With detailed profiles and the freshness of White and Linen, Brighton and Sea Spray are the perfect style.*



White  
WHT



Linen  
LIN

*Sea Spray Square  
Thermofoil, Linen*



# Select Series

The Select Series features quality cabinetry at an affordable price point in oak, maple, cherry, poplar, thermofoil and laminate door styles. As you browse through these pages, you will choose the style that is for you.



*Prairie Cherry, Dark*

## *Shaker Styling*

“I LOVE  
ECLECTIC DESIGN WITH  
CASUAL MODERN LIVING.”





*Harmony Cherry, Cocoa*

## Cherry Finishes

*All cherry door styles are available on each of these 7 finishes. You may choose to show the detailed beauty of cherry by selecting our Natural finish, or create a rich, dark kitchen with Sable.*

### STAINS



Natural  
NAT



Light  
LGT



Dark  
DRK



Sable  
SBL

### STAINS WITH GLAZES



Natural Java  
NCJ



Cocoa  
COC



Café  
CAF



*Harmony Cherry, Cocoa*



BON APPÉTIT



*Harmony Maple, Honey*



*Harvest Square Maple, Teaberry*





*Harvest Arch Maple, Light*

*Elegant traditions*

“SOFT PALE GREEN SILKS,  
CREAMY COLORS OF MELON AND IVORY  
REMINDE ME OF OUR TRIPS  
TO TO THE CHALETs OF FRANCE...  
THEIR BEAUTY SURROUNDS ME.”



*Prairie Maple, Medium*



*Prairie Maple, Light*



*Prairie Maple, Teaberry*

### *Shaker Style*

“THE SHAKER PHILOSOPHY IS  
'DON'T MAKE SOMETHING UNLESS IT IS  
BOTH NECESSARY AND USEFUL;  
BUT IF IT IS BOTH NECESSARY AND USEFUL,  
DON'T HESITATE TO MAKE IT BEAUTIFUL.'  
I AGREE!”



*Arlington Square Maple, Teaberry*

### *Informal Traditions*

"I ENJOY A RELAXED PACE  
AND OFTEN GO WITH THE  
FLOW. MY HOME IS A  
BLEND OF CASUAL  
AND INFORMAL STYLE...  
PERFECT!"



*Arlington Arch Maple, Light*



*Arlington Square Maple,  
Natural*



## *The Call of Nature*

"I AM BECKONED BY THE  
BEAUTY OF NATURE...  
MY HOME BRINGS THIS  
BEAUTY INDOORS."

*Arlington Square Maple, Medium*

# Maple Finishes

*The maple finish palette in the Select Series has six stained finishes from Natural to rich Teaberry. Four of the stained finishes are enhanced with a Glaze Technique which creates a one-of-a-kind unique look on each door. Wellborn's popular Mocha Crème painted finish adds to this broad color selection.*



*Arlington Arch Maple, Nutmeg & Arlington Square Oak, Sable*

## STAINS



Natural  
NAT



Light  
LGT



Caramel  
CML



Medium  
MED



Sable  
SBL



Teaberry  
TEA

## STAINS WITH GLAZES



Honey  
HON



Cinnamon  
CIN



Nutmeg  
NMG



Caramel Java  
CLJ

## PAINTS WITH GLAZES



Mocha Crème  
MCR



*Bedford Square Poplar, Caramel Java*



*Bedford Square Poplar, Mocha Crème*

## Poplar Finishes

### STAINS



Medium  
MED



Caramel  
CML



Dark  
DRK



Sable  
SBL



Sienna  
SEA



Espresso  
ESP

### STAINS WITH GLAZES



Nutmeg  
NMG



Caramel Java  
CLJ

*The finish palette for poplar includes 11 stained and painted finishes for a great selection.*

### PAINTS



Glacier  
GLR



Divinity  
DIV



Mocha Crème  
MCR

### PAINTS WITH GLAZES



*Arlington Square Oak,  
Medium*

### *Lodge Living*

“GRAB A POLE AND LET’S CATCH SOME TROUT FOR DINNER. I LOVE SITTING AROUND THE CAMPFIRE AFTER A LONG DAY ON THE RIVER, ROASTING MARSHMALLOWS, AND ENJOYING LAUGHS WITH FRIENDS AND FAMILY. THAT’S MY STYLE.”



*Arlington Arch Oak, Medium*





*Harvest Square Oak, Light*

## Oak Finishes

*The Select Series offers 4 stained finishes and 3 finishes with the Glaze Technique.*

### STAINS



Natural  
NAT



Light  
LGT



Medium  
MED



Sable  
SBL

### STAINS WITH GLAZES



Honey  
HON



Cinnamon  
CIN



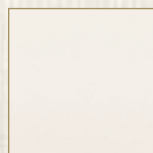
Nutmeg  
NMG



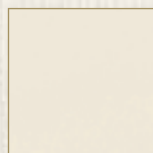
*Manchester Laminate, Sienna*

## Laminate Finishes

*The Select Series offers 4 color choices in laminate for designing sleek, contemporary styles.*



White  
WHT



Linen  
LIN



Sienna  
SEA



Spiceberry  
SBY



*Newport Thermofoil, White & Nantucket Thermofoil, White*



## Thermofoil Colors

*Thermofoil door styles are constructed by pressing MDF with a high quality foil through an intense heating process. The thermofoil has a lightly textured effect and is very durable.*



White  
WHT



Linen  
LIN

# Bathrooms



2009 HGTV Dream Home Master Bath, Sonoma Maple, GreyStone

## *Wellborn is Unique for Every Room of Your Home*

Wellborn cabinetry has a style for every room of your home. Home offices and home entertainment cabinetry include all the details on the interior to accommodate the latest technology. From the guest bath to the luxury master bath, our product has the selection for any style. Wellborn cabinetry has all the solutions for the perfect kitchen pantry. Keep all the clutter organized in a stylish mudroom or laundry room. And let's not forget the closet. Wellborn's Distinctive Closets program includes organization from the kids closet, the teen reach-in and walk-in closets to dressing suite designs. Whether remodeling or building your home, Wellborn is the best choice for all your cabinet needs.



2009 HGTV Dream Home Child's Bath, Hanover Maple with Classic Drawer Front, Glacier



Melrose Maple, Rustic

# Closets



*Seville Arch Maple, Cranberry*



*Sea Spray Square Thermofoil, White*



*Milan Cherry,  
Espresso*

# Pantries



*Sea Spray Square Thermofoil, Linen*



*2009 HGTV Dream Home Dish Pantry  
Sea Spray Square Thermofoil, White*

# Accessible



**94** *Rose Hall Square Maple, Medium*

# Bedrooms



*Essex Oak, Natural*

# Mud Rooms



*Harbour Maple, Divinity*



*Madison Square Maple, Rustic*



*Madison Square Maple, Sienna*

# Laundries



*2009 HGTV Dream Home Laundry  
Harbour Maple, Divinity*



*Sea Spray Square Thermofoil, White*

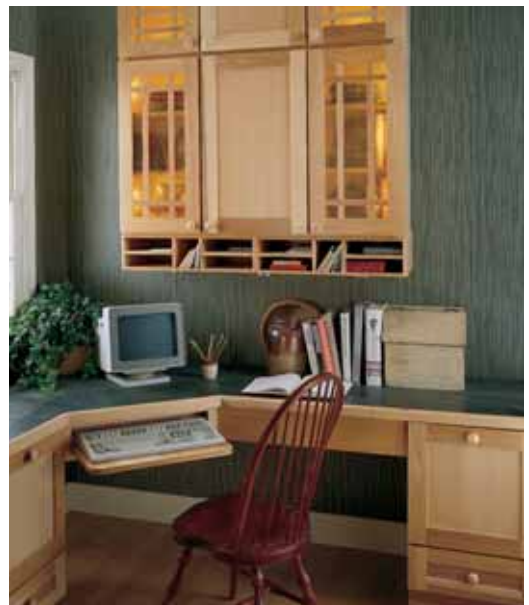
# Offices



*Hanover Maple with Classic Drawer Front, Espresso*



*Savannah Maple, Divinity*



*Hanover Hickory with Classic Drawer Front, Natural*

# Entertainment



*Vienna Cherry, Sable*



*Rose Hall Arch Maple, Honey & Midnight*



*Hanover Oak, Medium*

# Dining Rooms and Hutches



*Madison Square Maple, Mocha Crème*



*Essex Oak, Medium*



*Rose Hall Square Maple & Monterey Maple, Honey & Antique Evergreen*



*Hawthorne Maple, Mocha Crème*



*Seville Square Maple, Midnight*



*Rose Hall Square Hickory, Medium*



*Madison Square Cherry, Natural*



*Hanover Maple, Rustic*

# Living Rooms and Fireplace Surrounds



*Rose Hall Square Cherry, Dark*



*Rose Hall Arch Hickory, Natural*



*Savannah Maple, Vintage Midnight & Hawthorne Maple, Café*



*Hawthorne Maple, Café*

# Hood, Island & Wainscot Program



*Shaker Component Hood*



*Traditional Component Hood with Decorative Accents*



*48" Mantle Hood*



*Designer Chimney Hood*



*Designer Peninsula*



*Beaded Peninsula with Large Acanthus Onlay*



*Plain Peninsula with Valance*



*Plain Chimney with Narrow Arch Valance*



*Beaded Chimney with Narrow Arch Valance*



*Shaker Component Island*



*Component Island*



*Butcher Block Island with Shaker Legs*



*Melrose Maple, Greystone with  
Seville Square Maple, Greystone & Midnight*



*Butcher Block Island with Rope Legs*



*Floating Butcher Block Island*



*Wainscot, Single Stack Wall Application*



*Wainscot, Double Stack Wall Application*

# Accessories & Mouldings

Add the finishing touch to your layout with selections from our accessory and moulding collection. For more décor suggestions and our complete product line up, see our Details for Perfection, Moulding and Accessory Collection.



Pantry Storage Kit



Base Filler Pullout



Wood Tiered Cutlery Tray



Pot & Pan Pullout



Tambour Storage Unit



102 18" Pantry Pullout



Base Lazy Susan with Wood Rotary Shelves



Base Super Chef Cabinet with Door Shelf Kit



Dovetail Full Extension Sliding Shelves



Deep Drawer Pegged Dish Organizer



*Rope Split Spindle, Split Spool, Split Plinth Block & Chunky Bun Leg*



*Vertical Acanthus Onlay*



*Acanthus Leg & Moulding*



*Mission Corbel*



*Large Fancy Acanthus Corbel*



*Woven Rosette*



*Small Light Rail Moulding*



*Traditional Crown Moulding, Rope Moulding, Rosette, Split Plinth Block, Split Spindle & Inset Light Rail Moulding*



*Small Wicker Basket Kit*



*Rattan Panels*



*Cove Light Rail Moulding, Small Grape Onlay & Fluted Filler*



*Chunky Rope Table Leg*



*Fluted Decorative Leg*



*Large Woven Corbel Leg*



*Decorative Mission Foot*



*Mission Foot*

# Mullion Doors

Display your grandmother's china, heirloom teapot collection or elegant crystal with our decorative glass doors and mullion doors. Spice up your kitchen, dining room or bath with one of these doors or just create an area of interest involving your favorite collectible.



*Square*

*Applied Moulding*

*Cathedral*

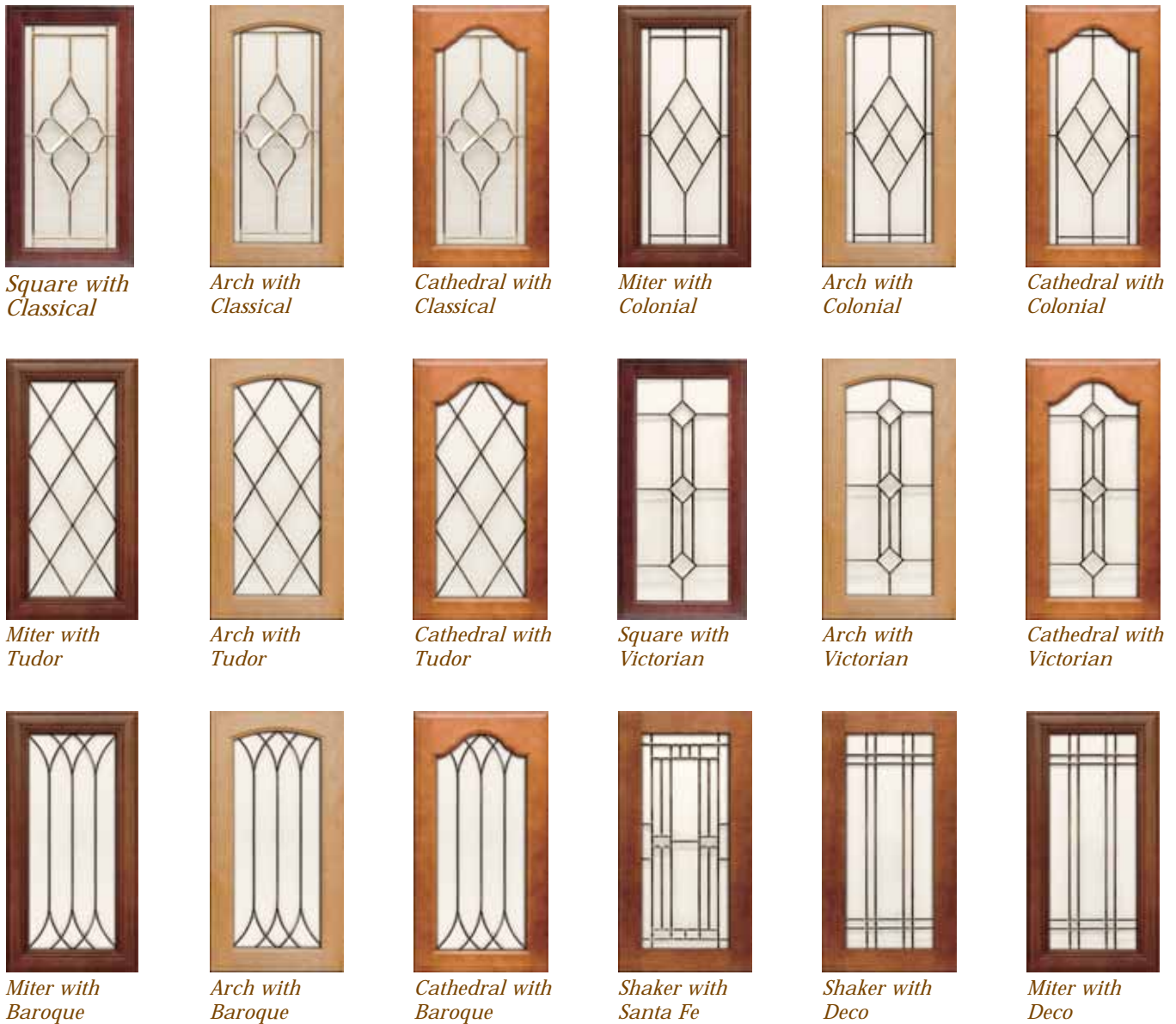
*Puffy Miter*

*Arch*

*Shaker*

*Half Arch*

# Decorative Glass Doors



*Square with Classical*

*Arch with Classical*

*Cathedral with Classical*

*Miter with Colonial*

*Arch with Colonial*

*Cathedral with Colonial*

*Miter with Tudor*

*Arch with Tudor*

*Cathedral with Tudor*

*Square with Victorian*

*Arch with Victorian*

*Cathedral with Victorian*

*Miter with Baroque*

*Arch with Baroque*

*Cathedral with Baroque*

*Shaker with Santa Fe*

*Shaker with Deco*

*Miter with Deco*

# Quality Drawer Options

SELECT SERIES

## Standard Furniture Board Drawer



*3/4" Wood grain/white laminated furniture board drawer with epoxy coated, self-closing, side-mount drawer slides*

## Options Solid Wood Drawer (WD)



*3/4" Solid hardwood drawer box in natural finish featuring classic dovetail construction and smooth undermount drawer slides*

## Full Extension Drawer Slides featuring Blumotion (FXCC & WD)



*3/4" Solid hardwood drawer box in natural finish with classic dovetail construction and undermount full extension soft close drawer slides with Blumotion*

DELUXE SERIES

## Standard Furniture Board Drawer



*3/4" White laminated furniture board drawer sides with white epoxy coated self-closing captive drawer slides*

## Options Solid Wood Drawer (WD)



*3/4" Solid hardwood drawer box in natural finish featuring classic dovetail construction and smooth undermount drawer slides*

## Full Extension Drawer Slides featuring Blumotion (FXCC & WD)



*3/4" Solid hardwood drawer box in natural finish with classic dovetail construction and undermount full extension soft close drawer slides with Blumotion*

PREMIER SERIES

## Standard Solid Wood Drawer



*3/4" Solid hardwood drawer box in natural finish with classic dovetail construction and smooth undermount drawer slides*

## Option Full Extension Drawer Slides featuring Blumotion (FXCC)



*3/4" Solid hardwood drawer box in natural finish with classic dovetail construction and undermount full extension soft close drawer slides with Blumotion*

WOODCRAFT SERIES

## Standard Full Extension Undermount Drawer Slides featuring Blum Tandem Plus™ (FXDS)



*3/4" Solid hardwood drawer box featuring classic dovetail construction and undermount Full Extension Drawer Slides with self-closing ball bearing slides*

## Option Full Extension Drawer Slides featuring Blumotion (FXCC)



*3/4" Solid hardwood drawer box in natural finish with classic dovetail construction and undermount full extension soft close drawer slides with Blumotion*

# Heirloom Quality Construction



## Best

3/2" x 3/4" Wood grain laminated plywood hanging rails. WellGrip® high impact polystyrene corner braces stapled into sides and frame

WellShield® interior is natural maple wood grain laminate.\*\*

3/4" Thick laminated plywood adjustable shelves with edge banding; dual locking WellLock Shelf Clips®

3/8" Thick wood grain laminated plywood back

1/2" Thick wood grain laminated plywood top and bottom

24-step WellGuard Finishing System® for a furniture like luster and years of beauty



1/2" Unfinished plywood end panels (Finished Cabinet End and Matching Finished End options available)

1 1/4" x 3/4" kiln-dried solid wood face frames; mortised and tenoned, glued and stapled

Solid wood drawer fronts. 3/4" Solid hardwood drawer in a natural finish with finished plywood bottom, dovetail construction and full extension undermount drawer slides

Option: Full extension drawer slide with soft close action

Solid wood raised panel doors of cherry, character cherry, maple, character maple, oak or hickory. \*\*\*\* Doors have WellLine® 6-way adjustable concealed hinges

4 1/2" h x 3 3/8" d Toe kick cut out, 1/2" unfinished plywood toe kick extends to cabinet floor for captive construction

## All Wood Construction

\*\* For Glacier and Divinity Specialty Finishes, the interior and exterior will be natural maple wood grain laminate.

\*\*\*\* Refer to door style construction for specific door styles.



## Better

3/2" x 1/8" Wood grain\*\*\* laminated fiberboard hanging rails. WellGrip® high impact polystyrene corner braces stapled into sides and frame

WellShield® interior is natural maple wood grain\*\* laminate

3/4" Wood grain\*\*\* laminated furniture board adjustable shelves with edge banding; dual locking WellLock Shelf Clips®

1/8" Wood grain\*\*\* printed MDF back

1/2" Wood grain\*\*\* laminated furniture board top and bottom

24-step WellGuard Finishing System® for a furniture like luster and years of beauty



1/2" Cherry, maple, oak or hickory \*\*\* wood grain, \*\* white or linen laminated furniture board end panels complement door. \*

Option: 1/2" thick plywood ends with unfinished exterior

1 1/4" x 3/4" kiln-dried solid wood face frames; mortised and tenoned, glued and stapled

Solid wood drawer fronts. 3/4" Solid hardwood drawer in a natural finish with finished plywood bottom, dovetail construction and smooth undermount drawer slides

Option: Full extension drawer slide with soft close action

Solid wood raised panel doors of cherry, character cherry, maple, character maple, oak or hickory. \*\*\*\* Doors have WellLine® 6-way adjustable concealed hinges

4 1/2" h x 3 3/8" d Toe kick cut out, 1/2" unfinished furniture board toe kick extends to cabinet floor for captive construction

## 3/4" Wood Drawer Standard

\* For Specialty Finishes, end panels will have a natural maple wood grain laminate (does not match cabinet front).

\*\* For Glacier and Divinity Specialty Finishes, the interior and exterior will be natural maple wood grain laminate.

\*\*\* For Brighton door styles, drawer front is 3/4" fiberboard with White or Linen thermofoil laminate. The cabinet interior is white laminate. The cabinet exterior will be White or Linen. The face frames are painted maple. Cabinets made with uniform construction will have a natural maple wood grain laminate interior.

\*\*\*\* Refer to door style construction for specific door styles.



*Good*

3½" x ½" White laminated fiberboard hanging rails. WellGrip® high impact polystyrene corner braces stapled into sides and frame

WellShield® white laminated interior. ¾" White laminated furniture board adjustable shelves with edge banding; dual locking WellLock Shelf Clips®

½" Thick white printed MDF back

½" White laminated furniture board top and bottom



1¾" x ¾" Kiln-dried, solid wood face frames; mortised and tenoned, glued and stapled

¾" White laminated furniture board drawer sides, tenoned to accept ½" sub-front and back; ½" white printed hardboard drawer bottom, ¾" thermofoil laminated fiberboard drawer front, epoxy-coated captive self-closing drawer slides

Option: ¾" Solid wood drawer upgrade with dovetail construction and smooth undermount drawer slides

Option: Full extension drawer slide with soft close action

½" Laminated furniture board end panels complement door

Option: ½" Thick plywood ends with unfinished exterior

Doors have WellLine® 6-way adjustable concealed hinges

4½" h x 3¾" d Toe kick cut out, ½" unfinished furniture board toe kick extends to cabinet floor for captive construction

*Durable Thermofoil*



*Good*

3½" x ½" Wood grain/white laminated fiberboard hanging rails. WellGrip® high impact polystyrene corner braces stapled into sides and frame

WellShield® wood grain/white laminate interior. ¾" Wood grain/white laminated furniture board adjustable shelves with edge banding; dual locking WellLock Shelf Clips®\*\*

½" Wood grain/white printed MDF back

½" Wood grain/white laminated furniture board top and bottom



1¾" x ¾" Kiln-dried, solid wood face frames; mortised and tenoned, glued and stapled

¾" Wood grain/white laminated furniture board drawer sides, tenoned to accept ½" sub-front and back, ½" wood grain/white printed hardboard drawer bottoms, ¾" solid wood drawer front\*, epoxy coated self-closing side mount drawer slides

Option: ¾" Solid wood drawer upgrade with dovetail construction and smooth undermount drawer slides

Option: Full extension drawer slide with soft close action

½" Complementary wood grain/white/linen laminated furniture board end panels\*\*

Option: ½" Thick plywood ends with unfinished exterior

Doors have WellLine® 6-way adjustable concealed hinges

4½" h x 3¾" d Toe kick cut out, ½" unfinished furniture board toe kick extends to cabinet floor for captive construction

*Built to Last*

The Select Series has a machine sanded finish process and does not include the detailed sanding technique featured in the Wellborn Collection; therefore, we do not recommend designs combining the series.

\* For Thermofoil door styles, drawer front is ¾" fiberboard with white thermofoil laminate. The cabinet tops, bottoms, end panels and shelves are white laminate. The face frames are painted maple. Interior will be white.

\*\* For Glacier, Divinity or Mocha Crème Specialty Finishes, the interior and exterior will be natural maple wood grain laminate.

# WellGuard Finishing System®

Wellborn takes great pride and care with the finishing of our kitchen furniture. Years of research partnered with development through Valspar have resulted in The WellGuard Finishing System® — a 24-step superb finishing process. Shown below are some of the key quality aspects of our finishing process which all of our stained finishes receive.

1. Wellborn **hand selects** the finest wood to build our own doors, drawer fronts and face frames.
2. Surfaces are sanded on a **20 person manual sanding line** to provide a smooth consistent finish and **cross grain elimination**.
3. Dust particles are removed and **every door is quality inspected** prior to finishing.
4. A sap stain is applied to **tone and balance** the color and grain.
5. A **specially formulated blend** of grain enhancing dye stain is applied to add color depth.
6. Surfaces are **hand rubbed** with a wiping stain to ensure complete color coverage.
7. The surfaces are air dried and **inspected** for color.
8. The first coat of **durable catalyzed sealer** is applied.
9. Our products are **slowly oven-cured** providing a tough, durable, baked-on finish.
10. The surfaces are **hand sanded** with fine grit sandpaper and inspected for **color correctness** and quality.
11. The second coat of catalyzed **melamine enriched** sealer is applied.
12. Our products are **oven-cured** a second time.
13. The surfaces are **hand sanded** again with a fine grit sandpaper to provide a smooth surface for the topcoat.
14. Some finishes receive a **shading** technique.
15. The surface is again **hand sanded**.
16. The surfaces are **hand wiped** with a resin friendly tack cloth in preparation for final topcoat.



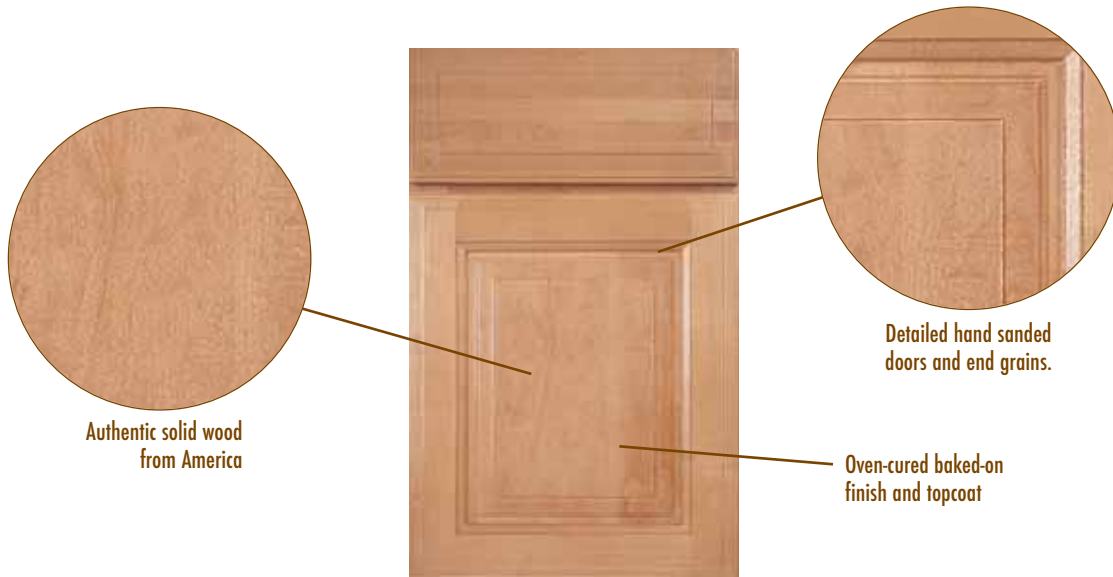
17. Each piece is **inspected** for consistency of shading or glazing applications.
18. A **third coat** of sealer is applied.
19. The surfaces are **hand sanded** again.
20. The resin blend **melamine enriched** topcoat is applied.
21. The conversion varnish topcoat is oven cured, creating a tough, **baked-on finish**.
22. The final product is personally **quality inspected** using a sheen meter to maintain a consistent gloss level.
23. Each piece passes through a **UV drying station** to complete the curing process.
24. Finished doors and wood components are stored in **individual staging racks** to prevent scratches.



The WellGuard Finishing System has been tested against 17 common household chemicals and food products and passed beautifully. Those agents include:

- Gasoline
- Water
- Coffee
- Olive Oil
- Ammonia
- Fly Spray
- Detergent
- Soaps
- Alcohol
- Mustard
- Crayons
- Shoe Polish
- Tea
- Vinegar
- Dye
- Citric Acid
- Beet Juice

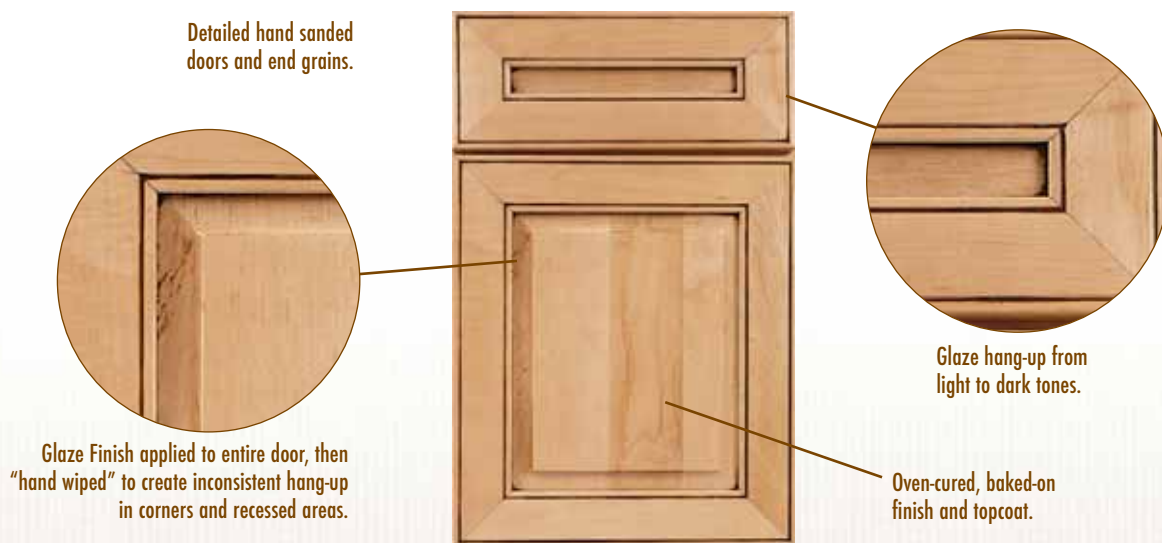
## STAINED FINISHES



Wellborn's WellGuard Finishing System® is a superb finishing process. The Stained Finishes truly display the natural beauty and characteristics of each individual wood species. The detailed hand sanding and hand rubbed processes result in a high quality finish that enhances the wood grain in each door. A toner may

be applied depending on the stain color to equalize natural sap levels. As layers of finish color and sealers are applied, hand sanding continues throughout the process ensuring the best finish in the industry. The final step is a conversion varnish topcoat that is oven-cured creating a tough baked-on long lasting finish.

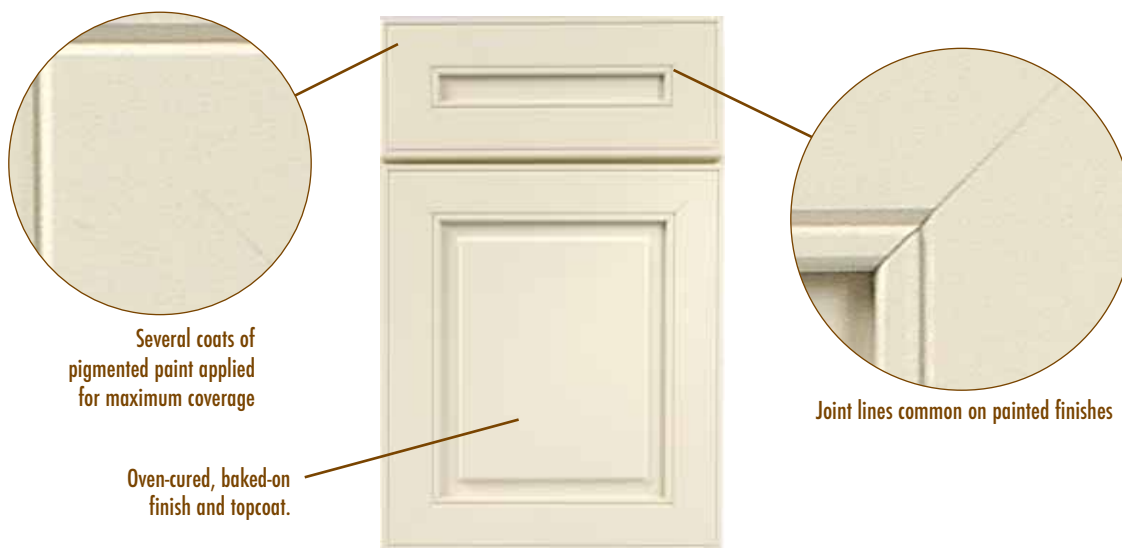
## STAINED FINISHES WITH GLAZE TECHNIQUE



The Glaze Technique on Stained Finishes is created by applying an accent stain over the entire door and then wiping off the glaze leaving a "Hang Up" of light to dark tones in the corners, deep grooves and wood grains creating an all over glazed look. The Glaze Technique purposely creates an uneven, inconsistent look of light to

dark tones. This hand rubbed application adds warmth and richness to the wood and results in a unique, one of a kind look on each door. The final step is a conversion varnish topcoat that is oven-cured creating a tough baked-on long lasting finish.

## PAINTED FINISHES



Several coats of pigmented paint applied for maximum coverage

Oven-cured, baked-on finish and topcoat.

Joint lines common on painted finishes

Painted Finishes are created with several coats of pigmented paint and two coats of sealers. Depending on the wood species chosen, some of the wood grain may show through the paint. Character maple will show more wood grain than standard maple. The natural characteristics of wood create a constant state of

expansion and contraction in every door, drawer front and face frame resulting in the visibility of joint lines. These visible joint lines are part of the beauty of painted finishes on natural wood. The final step is a conversion varnish topcoat that is oven-cured creating a tough baked-on long lasting finish.

## PAINTED FINISHES WITH GLAZE TECHNIQUE



Joint lines common on painted finishes

Glaze hang-up from light to dark tones

Several coats of pigmented paint applied for maximum coverage

Glaze Finish applied to entire door, then "hand wiped" to create inconsistent hang-up in corners and recessed areas.

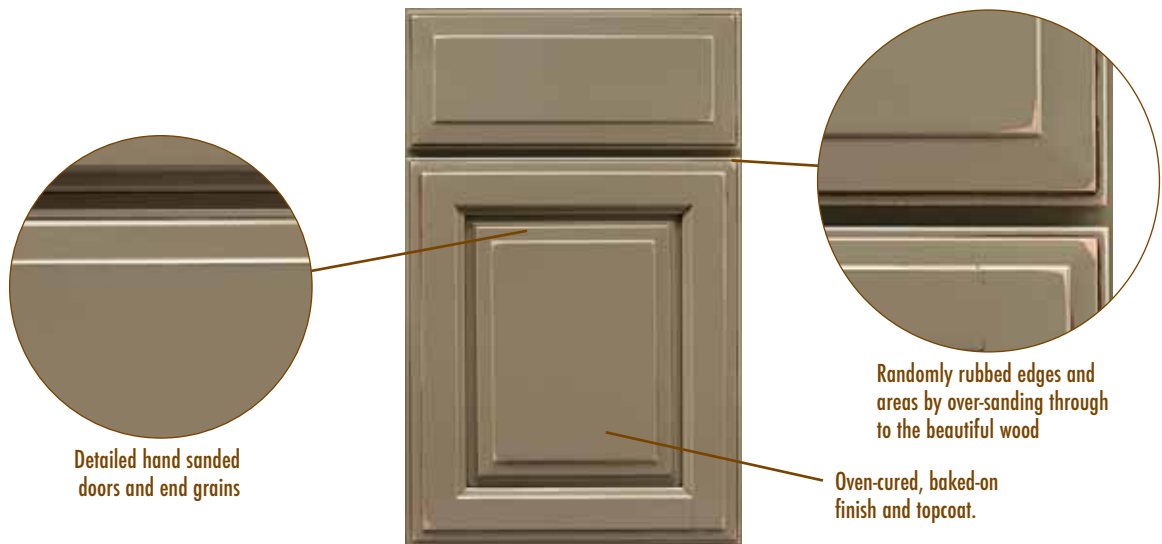
Oven-cured, baked-on finish and topcoat.

The Glaze Technique on Painted Finishes is created by applying an accent stain over the entire door and then wiping off the glaze leaving a "Hang Up" of light to dark tones in the corners, deep grooves and wood grains creating an all over glazed look.

The Glaze Technique that is applied over Painted Finishes is created with several coats of pigmented paint and two coats of sealers. Depending on the wood species

chosen, some of the wood grain may show through the paint. Character maple will show more wood grain than standard maple. The natural characteristics of wood create a constant state of expansion and contraction in every door and drawer front resulting in the visibility of joint lines. These visible joint lines are part of the beauty of painted finishes on natural wood. The final step is a conversion varnish topcoat that is oven-cured creating a tough baked-on long lasting finish.

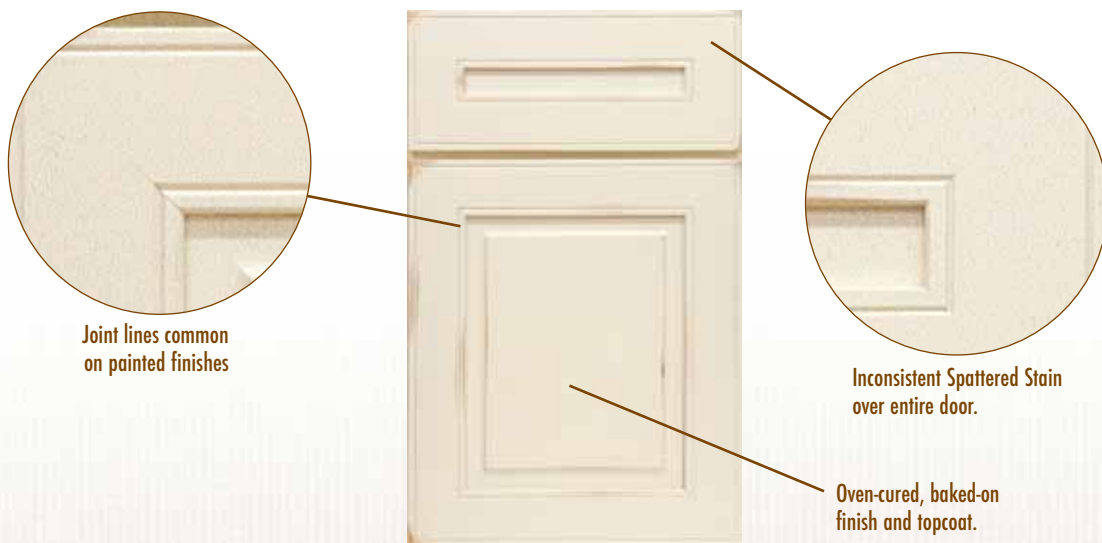
# THE VINTAGE TECHNIQUE ON PAINTED FINISHES WITH GLAZE TECHNIQUE



The Vintage Technique is created by sanding through to the raw wood creating a rubbed, worn effect. Then a coat of finishing stain is applied to the entire door. The product is then finished with our clear resistant topcoat to protect the aged look that was created.

Each piece will vary in the amount of sanding and will also vary within the piece itself. Due to the random placement of these effects, every door will be unique and no two doors will be identical. The worn edges will vary within individual doors and throughout the entire kitchen.

# THE COTTAGE TECHNIQUE



The Cottage Technique is created with a stain that is spattered inconsistently over the entire door. This technique can be applied to selected stained finishes and paints. The product is then finished with our clear resistant topcoat to protect the aged look that was

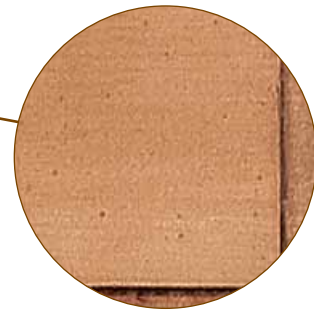
created. Each piece will vary in the amount of spattering which will also vary within the piece itself. Due to the random placement of these effects, every door will be unique and no two doors will be identical.

# SPECIAL EFFECTS



## Worm Hole Effects

Worm Hole Effects are created by small dents made in oval patterns to create an aged look. The worm hole technique is found on selected finishes.



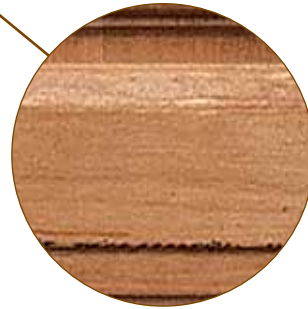
## SPATTERING

Spattering is an effect where a color stain is applied over the door by a speckling technique, leaving small "spatters" of slightly darker color all over the cabinets. Wellborn's spatter technique is found on selected finishes.



## BURNISHING

Burnishing is a technique used to darken the profile edges to create an antiqued effect by rasping and hard brushing. The burnishing technique is found on selected finishes.



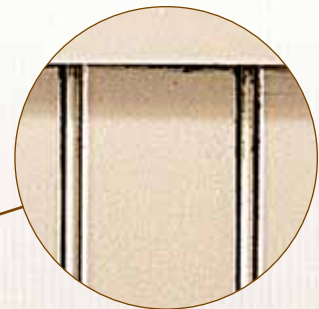
## DISTRESSING

Distressing is a technique where small dents, nicks, scratches, etc., are made in the wood to produce an aged look. The distressing technique is found on selected finishes.



## TICKING

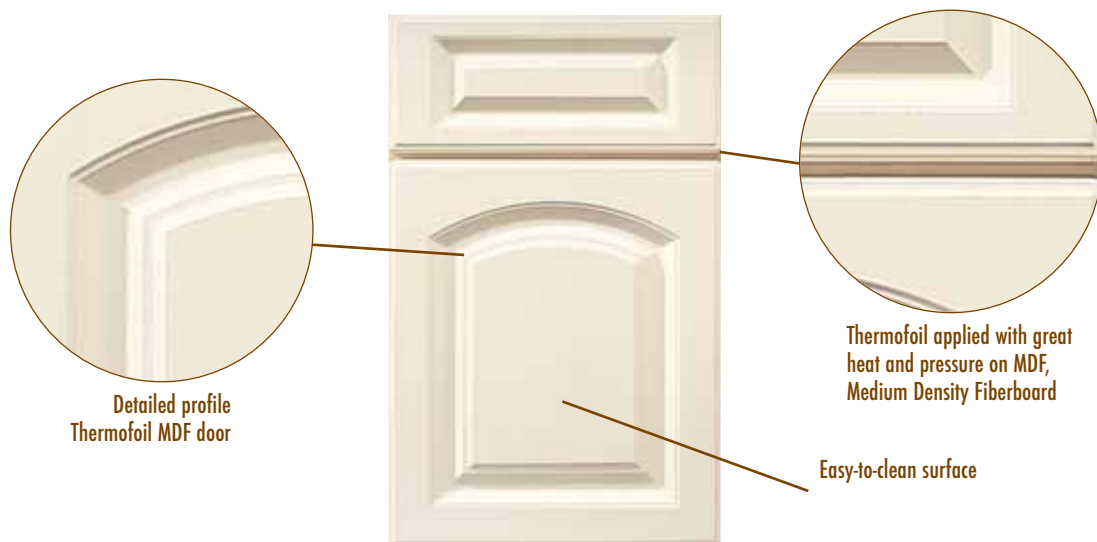
Oak is an open grain wood and therefore the Glaze Technique will hang up in all open grain areas of the door, which will appear as "ticking."



## GLAZING ON BEAD BOARD

Doorstyles with bead board grooves retain more stain in all finishes, resulting in a darker color in the grooves.

# THERMOFOIL



Thermofoil doors are created by pressing MDF (Medium Density Fiberboard) with a high quality foil that has a lightly textured effect. Foil is applied with an intense heat process and secured with durable glue to the MDF

substrate to ensure a clean smooth surface. The face frame of the cabinets with thermofoil doors will be painted to match the door color.

# Warranty Program



## *Five Year Limited Warranty - The Select Series*

*Wellborn Cabinet, Inc., provides a Five Year Limited Warranty on The Select Series to the original consumer purchaser for five years from the Wellborn Dealer's original date of purchase on our cabinetry parts.*



## *Lifetime Limited Warranty - The Deluxe, Premier and WoodCraft Series*

*Wellborn Cabinet, Inc., provides a Lifetime Limited Warranty on The Deluxe, Premier and WoodCraft Series to the original consumer purchaser for the lifetime of the product from the Wellborn Dealer's original date of purchase. The lifetime of cabinets is expected to be 10 years. Based on all other warranty terms and conditions being met, warranty claims will be prorated based on the expected lifetime of the product.*

## *Exclusive Lifetime Limited Warranty - Drawer Box, Door Hinge & Drawer Suspension System*

*Wellborn Cabinet, Inc., warrants our solid wood dovetailed drawer box to the original consumer purchaser for the lifetime of the product. Wellborn Cabinet, Inc., also offers an Exclusive Lifetime Limited Warranty to the original consumer purchaser on our Drawer Suspension Systems and Door Hinges. This warranty is expressed by the supplier. Replacement hinges and drawer slides are subject to availability from our supplier. If a claim is filed after a product becomes obsolete, the manufacturer will replace the discontinued product closest to being equivalent to the original.*

Wellborn Cabinet offers Limited Warranties to the original consumer purchaser. Please see warranty sheet for complete details.



## *Wellborn's Green Choice Program — Our Commitment to the Environment*

*It is Wellborn Cabinet, Inc.'s corporate-wide goal to fully incorporate leading environmental practices, policies and standards throughout our enterprise—from our suppliers through final delivery to our customers. Our environmental responsibility has extended to include selecting, educating and embracing suppliers based on their commitment to similar environmental practices including sustainable or recycled raw materials as well as low emission products where applicable. Here are just a few things Wellborn is doing to make sure our environment is healthy for generations to come:*

*Wellborn was one of the first companies to receive KCMA's Environmental Stewardship Program Certification.*

*Wellborn's Natural Gas Savings would heat 5,124 homes for one year. These savings come from our wood fired co-generation plant that is fed by waste shavings from our operations.*

*Wellborn collects all excess materials produced during cabinet manufacturing and includes it in a 100% Recycling Program.*



# The Beauty of Natural Hardwood

Hardwoods offer a tremendous selection of grain patterns, color variations and textures. Choices range from the bold statements of authentic American red oak, hickory and character maple to the more subdued personalities of cherry and maple. These variations define and enhance wood's natural beauty. Because no two trees are exactly alike, the cabinets made for your kitchen or bath will have subtle variations from the showroom displays or samples on which you base your selection. The quality solid hardwoods used in Wellborn cabinetry are some of the most beautiful and enduring natural materials available. All hardwoods, being a product of nature, vary from one piece to the next, even from the same tree, each having its own characteristics. Therefore, each piece of wood, each cabinet and each kitchen is unique. Cabinetry that emphasizes the rich grain pattern and unique texture of solid hardwood has a greater perceived value. No human being was ever intended to control the natural development of hardwoods. This is the unique beauty of natural hardwood and this is the distinct beauty of solid wood cabinets. Wellborn Cabinet, Inc., believes there is nothing more beautiful than solid wood. That is why Wellborn is one of the few remaining manufacturers who continues to use solid wood in our Premier and WoodCraft Series raised panel doors and drawer fronts.

## CHERRY



Cherry is synonymous with luxurious cabinets. The rich red highlights give the wood a distinctive appearance. Cherry will occasionally have tiny pin knots, pitch pockets and very small, dark streaks of gum. These features have fascinated woodworkers for centuries.

## POPLAR



Poplar is generally straight grained with fine, even texture. The wood has creamy white to pale brown color tones. Poplar is beautiful with medium to dark stains and painted finishes.

## CHARACTER CHERRY



Character cherry's unique characteristics are emphasized by randomly occurring various sized knots, pin knots, pitch pockets and small streaks of gum. Cluster knots and open knots could also be a feature. The amount of character will vary from each door making each kitchen unique.

## OAK



Authentic American red oaks are open-pored and produce dramatic grain patterns, dark mineral streaks and the authority and character that make oak the most widely used hardwood.

## MAPLE



Maple is widely used in the cabinetry industry. This wood species features a straight grain with several distinctive characteristics. These include unique figures such as bird's-eye, fiddle back, mineral streaks and curly grain patterns. Finely textured with a natural luster, this creamy-white to light reddish-brown wood is often used for cabinets and floors.

## HICKORY



Hickory has distinctive contrasting colors from light to dark and strong grain characteristics. The texture of hickory is open grained. Hickories by nature are heavy, hard, strong and stiff—producing durable cabinetry. Hickory is for homeowners desiring dramatic wood characteristics.

## CHARACTER MAPLE



Character maple's unique characteristics are brought out by randomly occurring, variously sized knots, pin holes, worm holes and tracks, gum and bark pockets, sugar tracks, heartwood and mineral streaks. Cluster knots and open knots could also be a feature. The amount of character marks will vary from each piece of wood making each kitchen unique.

## THERMOFOIL



Thermofoil doors and drawer fronts are covered in a strong, scratch-resistant thermofoil that is thermally glued and vacuum-sealed. To create the popular raised panel appearance we use precision, diamond-head routers to carve the double-step perimeter edge and center panel detailing from a solid slab of medium density fiberboard.



## Personalized Delivery



*All Wellborn cabinetry is shipped on our own fleet of company trucks. Wellborn drivers provide fast, personalized delivery to our network of customers.*



# WELLBORN

CABINET, INC.®

*The Essence of Cabinetry*

38669 Hwy. 77 • P.O. Box 1210 • Ashland, Alabama 36251  
(256) 354-7151 • Fax (256) 354-7022

[wellborn.com](http://wellborn.com)



*Distributed By:*

Due to the natural characteristics of wood and wood finishes and the limitations of photography and the lithographic printing process, the woods and wood finishes shown in this brochure may not accurately depict those offered by Wellborn Cabinet. See your local Wellborn Dealer for actual wood sample color selections. Decorative hardware shown is optional.